



Dings
CO.

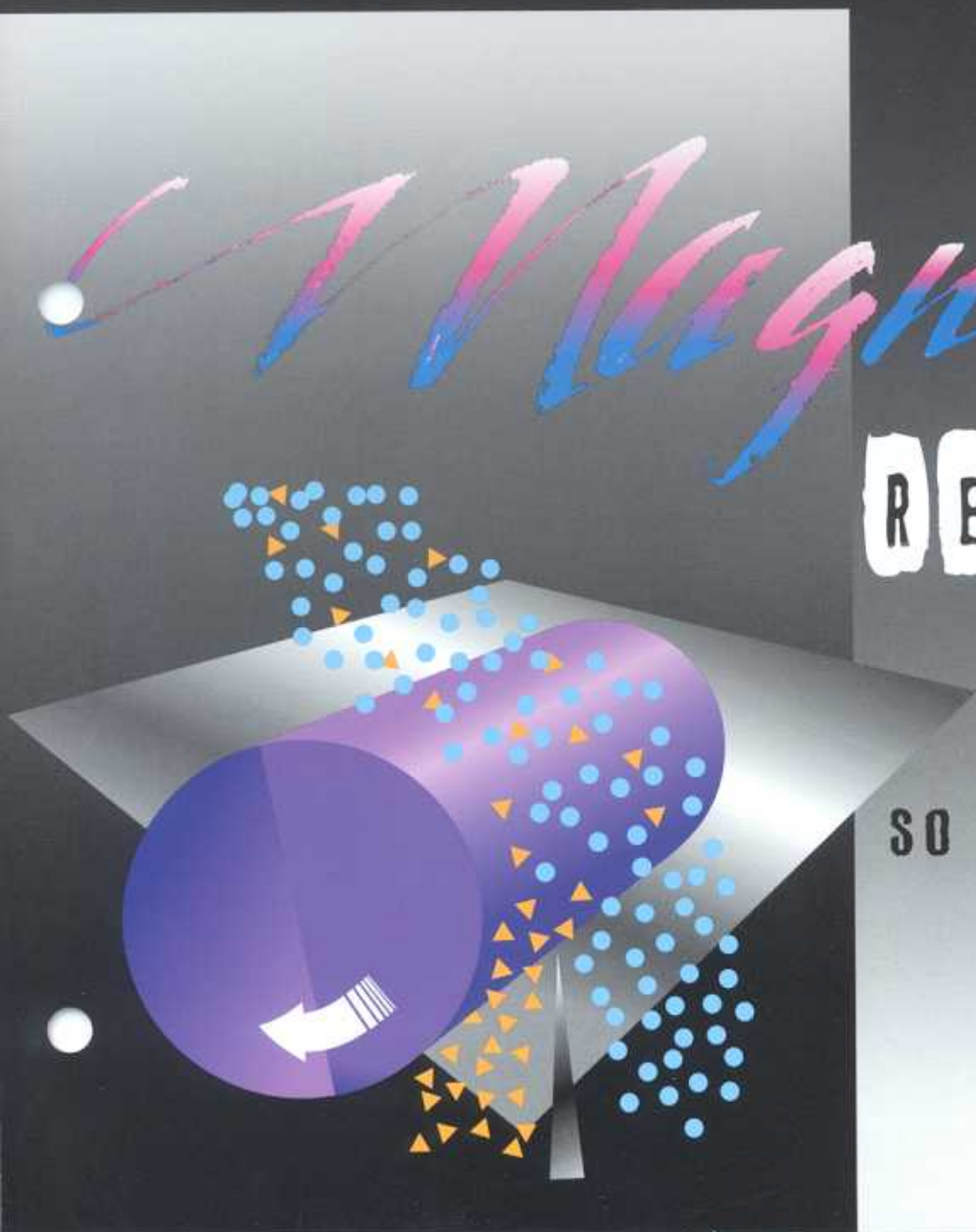
magnetic group

**MAGNETIC
DRUMS**

Magnetic

RESULTS

**SO SIMPLE...
SO EFFECTIVE**



Dings drums are all-purpose magnetic separators used in a wide variety of applications. They purify free-flowing powders and granular materials or concentrate and reclaim products in such materials. Nearly every kind of processing industry uses magnetic drums to remove ferrous metal contaminants. They're used extensively in foundries and for recycling plastic, aluminum, and glass. Magnetic drums also protect grinders, crushers, and other processing equipment against tramp iron damage, preventing costly repairs and downtime.

They can be installed inside closed chutes, at outlets of chutes and hoppers, or where materials discharge from feeders and conveyors. Drums are continuously self-cleaning; there's never any need to interrupt material flow for a cleaning cycle.



DRUM ONLY - TYPE PC

- Furnished without a drive motor and housing.
- Mounts easily with pillow block bearing and shaft clamp.
- Available with either a ceramic or rare earth magnet assembly.
- Choice of standard or agitating poles.
- Standard drum widths: 8" through 48".
- Standard drum diameters:
 - Ceramic - 12", 18", and 24"
 - Rare Earth - 12"
 - High Strength Rare Earth - 15"



DRUM AND HOUSING - TYPE FC

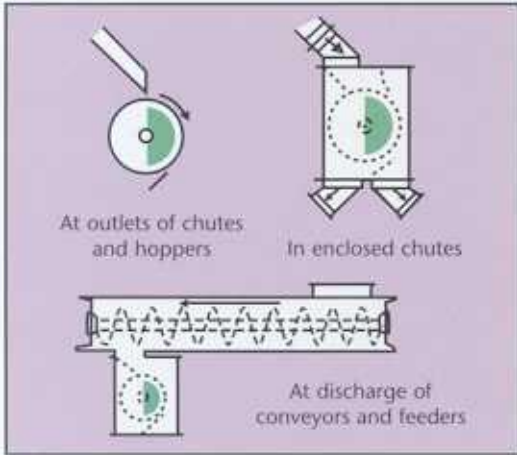
- Furnished with a drive motor, feed leveler, splitter, and housing.
- Available with either a ceramic or rare earth magnet assembly. For sizes, see Type PC, above.

MULTIPLE DRUM ARRANGEMENT

Dings magnetic drums are available in double or triple configurations for applications requiring maximum removal of ferrous, such as cleaning aluminum chips, ceramic material, or crumb rubber.



DRUMS PROVIDE CONTINUOUS, LOW-COST SEPARATION WITH SIMPLE OPERATING PRINCIPLE



Typical Installations
Dings magnetic drums integrate into existing material handling systems. Drums can also be fed manually.

APPLICATIONS AND TYPICAL INSTALLATIONS

Processing

- Remove ferrous contaminants or tramp iron from chemicals, plastics, sand, stone, fertilizer, cement, carbon, abrasives, glass, borings, grindings, pigments, grain, seed, cereal, candy, sugar, coffee, and other free-flowing granular material.

Recycling or Reclaiming

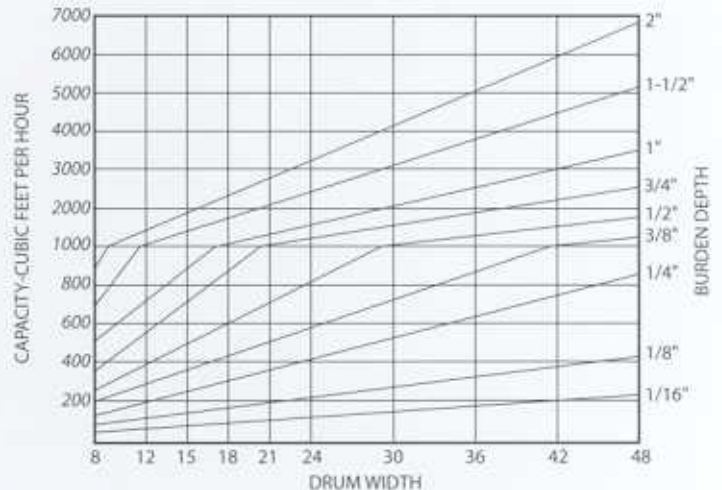
- Separate ferrous from recyclable materials such as plastic, aluminum, glass cullet, wood chips, and crumb rubber.
- Remove ferrous from shredded medical waste and steel shot and small slag from foundry sand.
- Reclaim steel shot used in bead blasting for bridge maintenance and other applications. These reclaiming systems use magnetic drums with an agitating pole design to recover steel shot from the paint, dirt, and other nonmagnetic debris.

SIZE SELECTION

Many factors enter into the selection of drum size: type of material processed, volume per hour, particle or lump size of material, degree of separation, and size, type, and quantity of ferrous matter contained in the material.

Generally, the larger the drum diameter and width, the greater the volume of material which can be handled. For removal of fine ferrous contaminants, a larger drum is needed or the flow rate needs to be reduced. This will produce a shallower burden which is needed for maximum separation.

The selection chart shows the drum width recommended for specific flow rates and burden depths. Dings sales engineers can help you determine diameter and make a final selection based on your particular application.



Magnetic

RESULTS

SELECTING THE RIGHT DRUM SEPARATOR

	<u>APPLICATIONS</u>	<u>CONSTRUCTION</u>	<u>SIZES</u>
CERAMIC Economical Separate steel from powder and granular products Use for rough or high purity depending on product Use for metal retrieval	Tire recycling Crumb rubber Mineral processing Foundry sand Shot blast retrieval	Steel head Stainless steel shell Steel housing DFC or lateral (alternating) pole circuits available	12" diameter, 8" - 48" widths 18" diameter, 15" - 48" widths 24" diameter, 18" - 48" widths
RARE EARTH High degree of separation Use for high product purity Better fines separation	Glass manufacturing Ceramics Chemical processing	Stainless steel head Stainless steel shell Stainless steel housing Salient (sandwich) circuit	12" diameter, 8" - 24" widths
HIGH STRENGTH RARE EARTH High degree of separation Separate paramagnetic particles Not appropriate for large ferrous removal 6500 surface gauss	Glass manufacturing Ceramics Chemical processing	Stainless steel head Stainless steel shell Stainless steel housing Salient (sandwich) circuit	15" diameter, 12" - 36" widths



Magnetic RESULTS

Dings Company Magnetic Group
4740 W. Electric Avenue
Milwaukee, WI 53219
414.672.7830
414.672.5354 Fax
www.dingsco.com